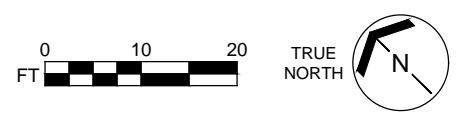


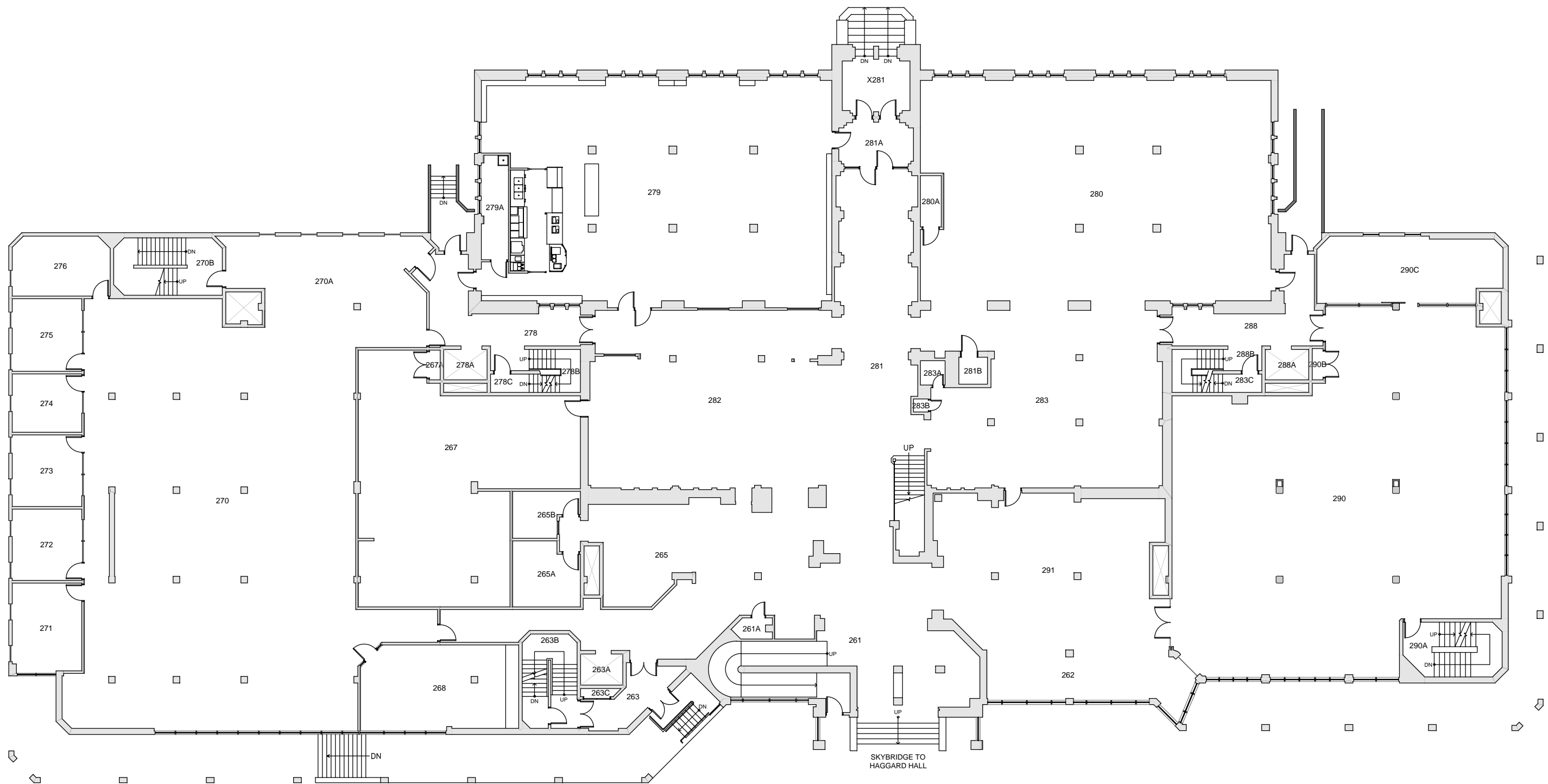
BASE FLOOR PLAN

Western Washington University (WWU) makes these documents available on an "as is" basis. All warranties and representations of any kind with regard to said documents are disclaimed, including the implied warranties of merchantability and fitness for a particular use. WWU does not warrant the documents against deficiencies of any kind.



WILSON LIBRARY FLOOR 1	
Last Drawing Revision: 04/22/2019	Last Sync With AIM: 04/12/2019

Building	WL
Floor #	1



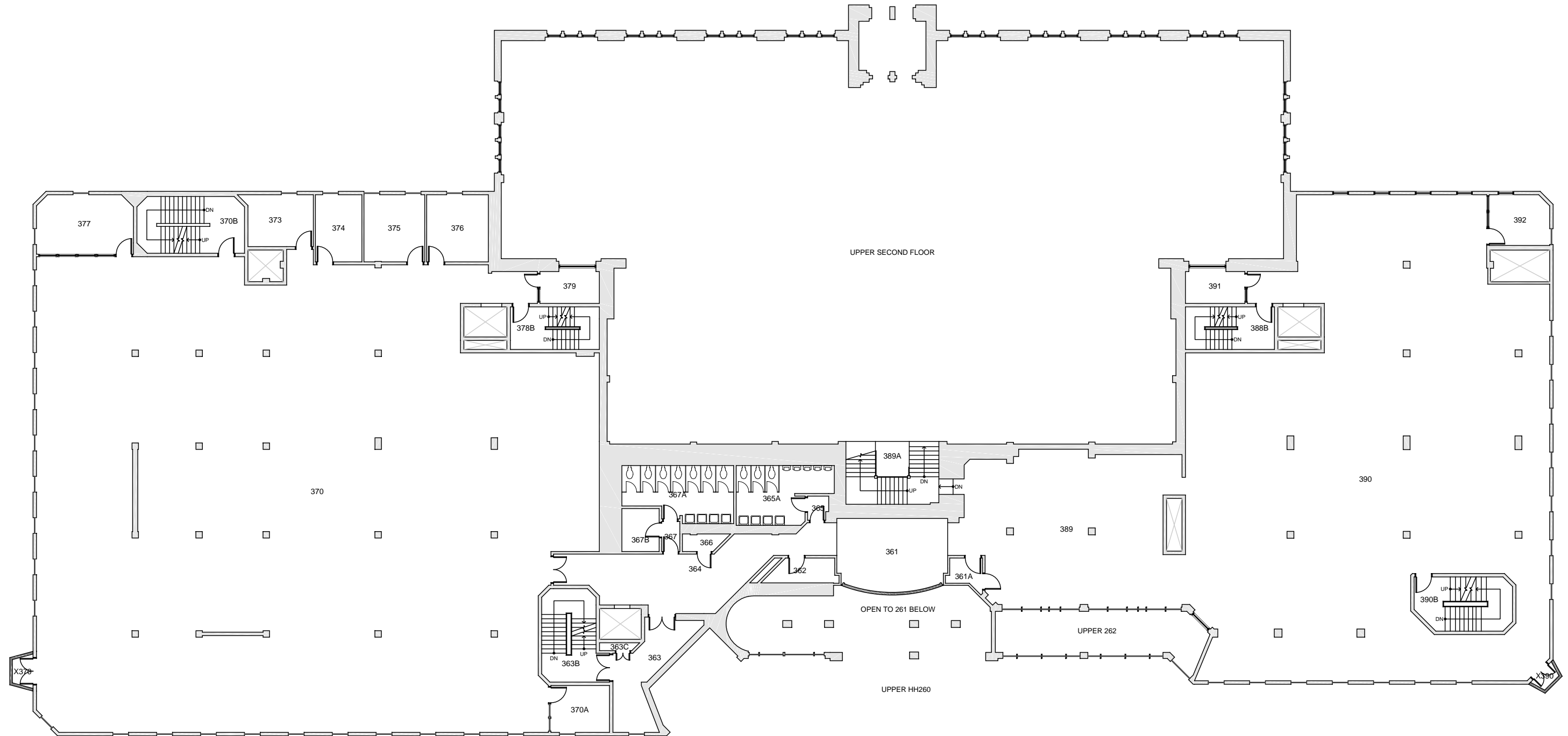
BASE FLOOR PLAN

Western Washington University (WWU) makes these documents available on an "as is" basis. All warranties and representations of any kind with regard to said documents are disclaimed, including the implied warranties of merchantability and fitness for a particular use. WWU does not warrant the documents against deficiencies of any kind.



WILSON LIBRARY FLOOR 2	
Last Drawing Revision: 09/28/2018	Last Sync With AIM: 09/28/2018

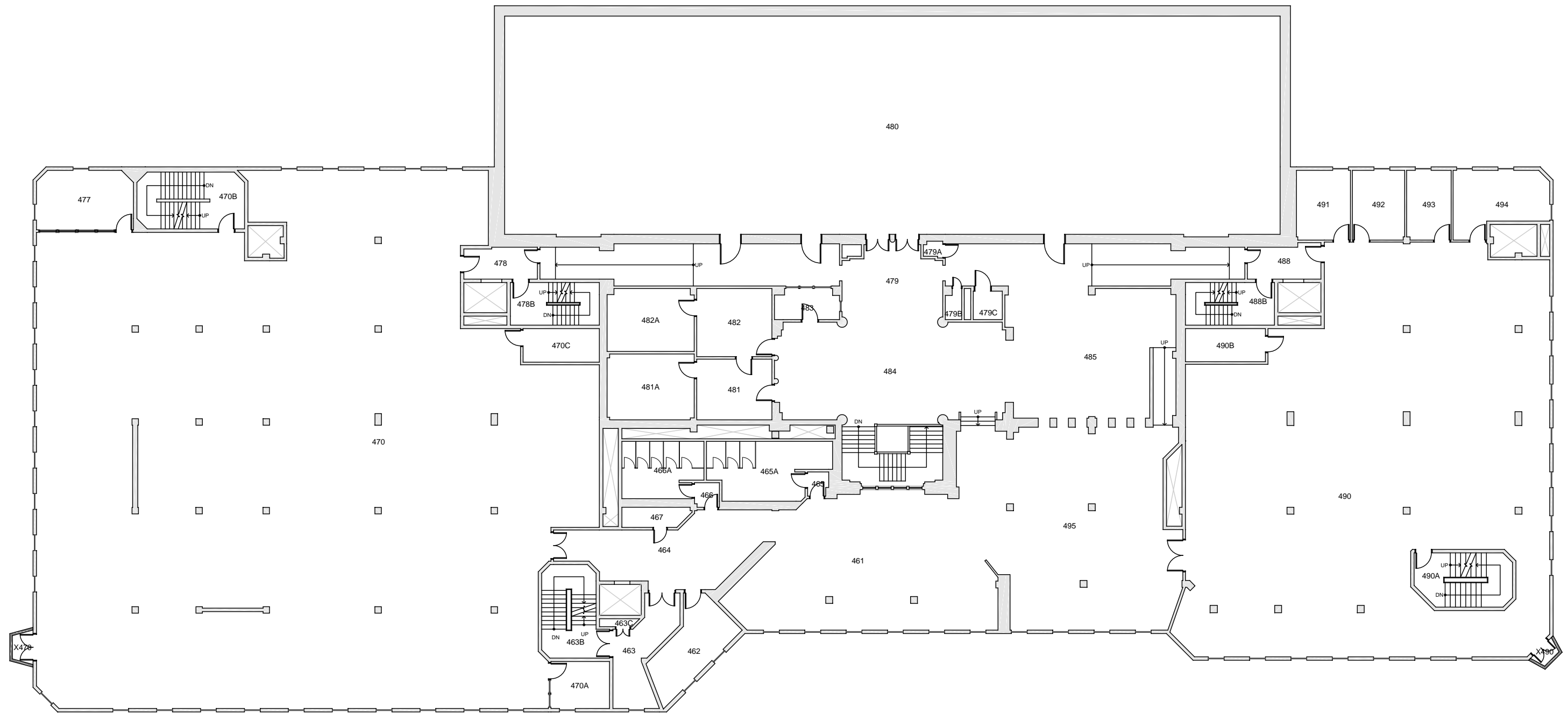
Building	WL
Floor #	2



Western Washington University (WWU) makes these documents available on an "as is" basis. All warranties and representations of any kind with regard to said documents are disclaimed, including the implied warranties of merchantability and fitness for a particular use. WWU does not warrant the documents against deficiencies of any kind.



WILSON LIBRARY FLOOR 3		Building/Zone WL
Date Revised: 03/14/2016	Last Sync With FAMIS: 09/09/2015	Floor # 3

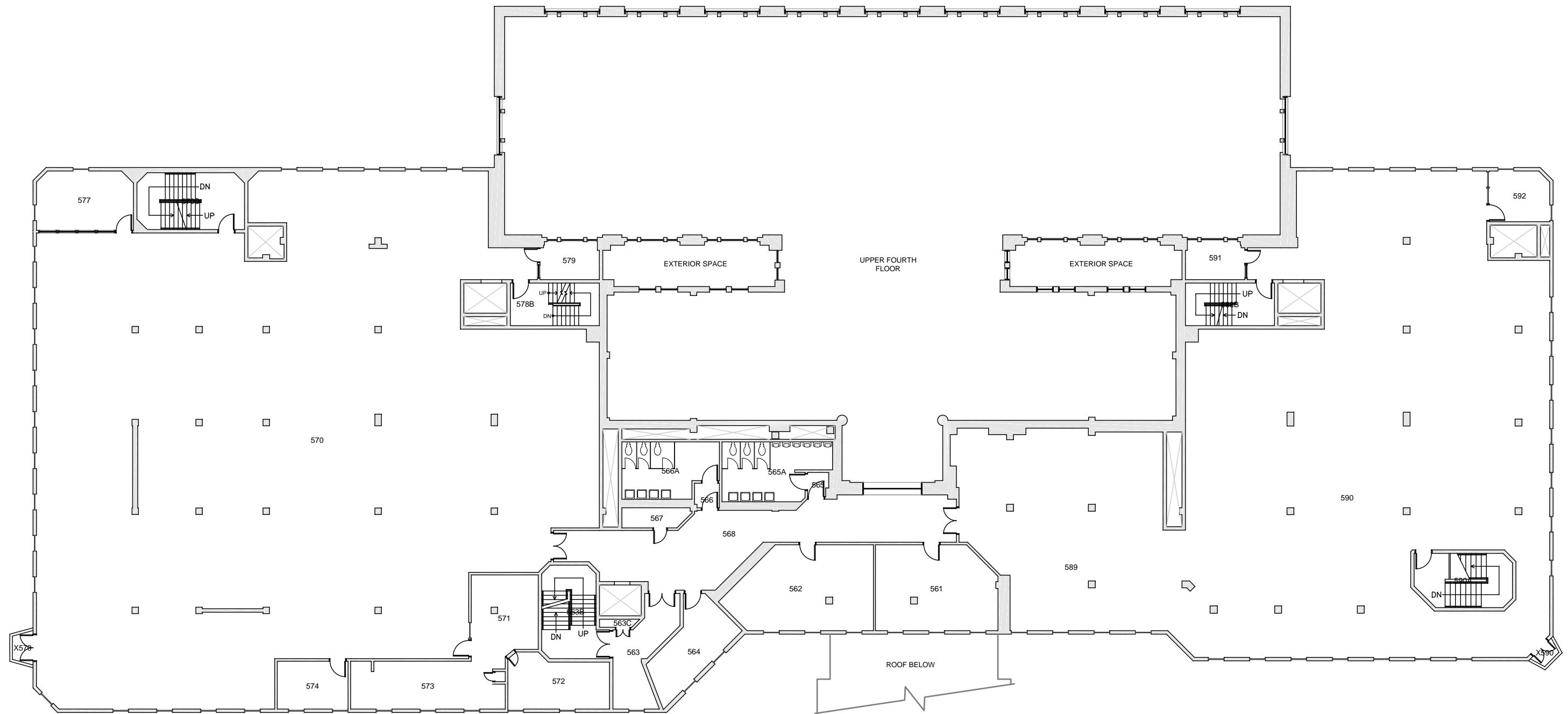


Western Washington University (WWU) makes these documents available on an "as is" basis. All warranties and representations of any kind with regard to said documents are disclaimed, including the implied warranties of merchantability and fitness for a particular use. WWU does not warrant the documents against deficiencies of any kind.



WILSON LIBRARY FLOOR 4	
Date Revised: 03/14/2016	Last Sync With FAMIS: 09/09/2015

Building/Zone	WL
Floor #	4

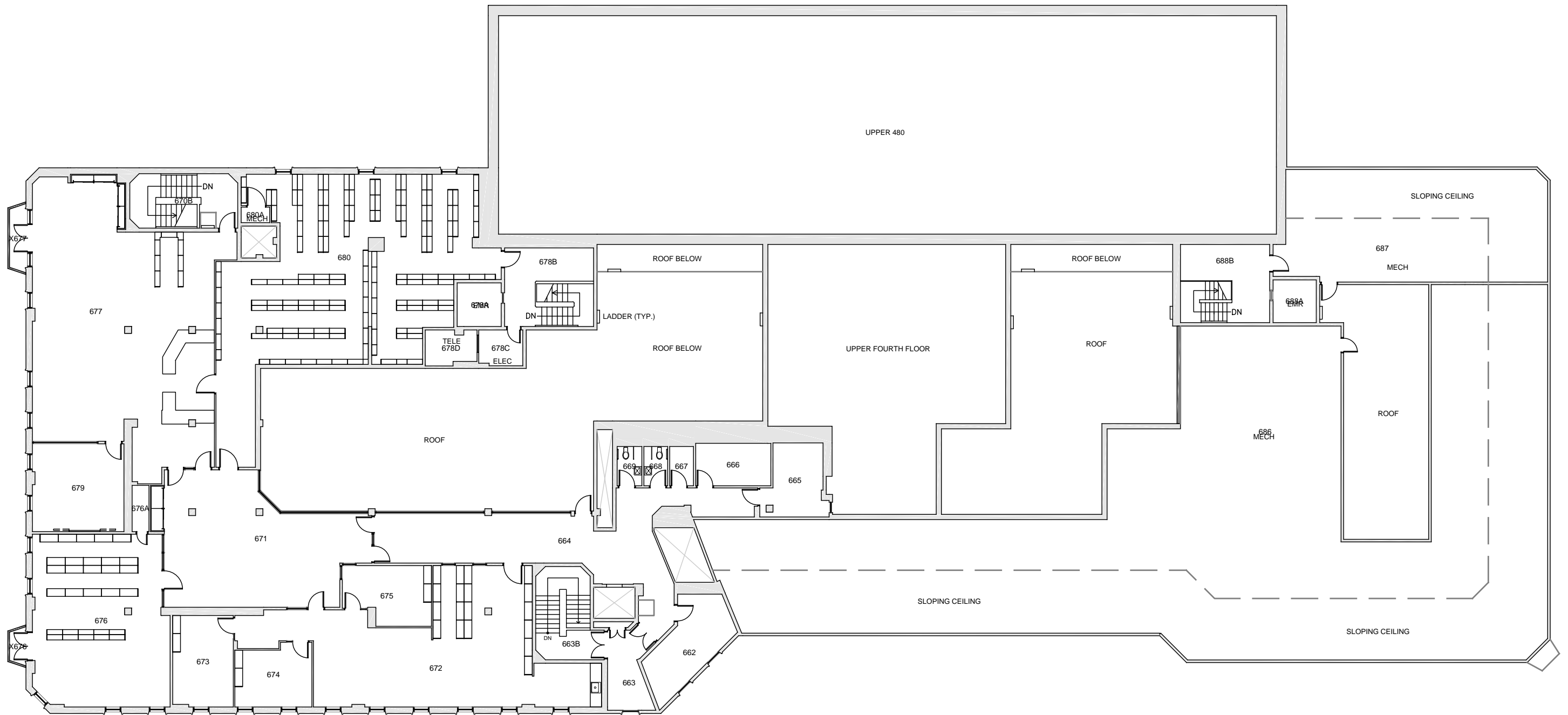


Western Washington University (WWU) makes these documents available on an "as is" basis. All warranties and representations of any kind with regard to said documents are disclaimed, including the implied warranties of merchantability and fitness for a particular use. WWU does not warrant the documents against deficiencies of any kind.



WILSON LIBRARY FLOOR 5	
Date Revised: 03/14/2016	Last Sync With FAMIS: 09/09/2015

Building/Zone	WL
Floor #	5



Western Washington University (WWU) makes these documents available on an "as is" basis. All warranties and representations of any kind with regard to said documents are disclaimed, including the implied warranties of merchantability and fitness for a particular use. WWU does not warrant the documents against deficiencies of any kind.



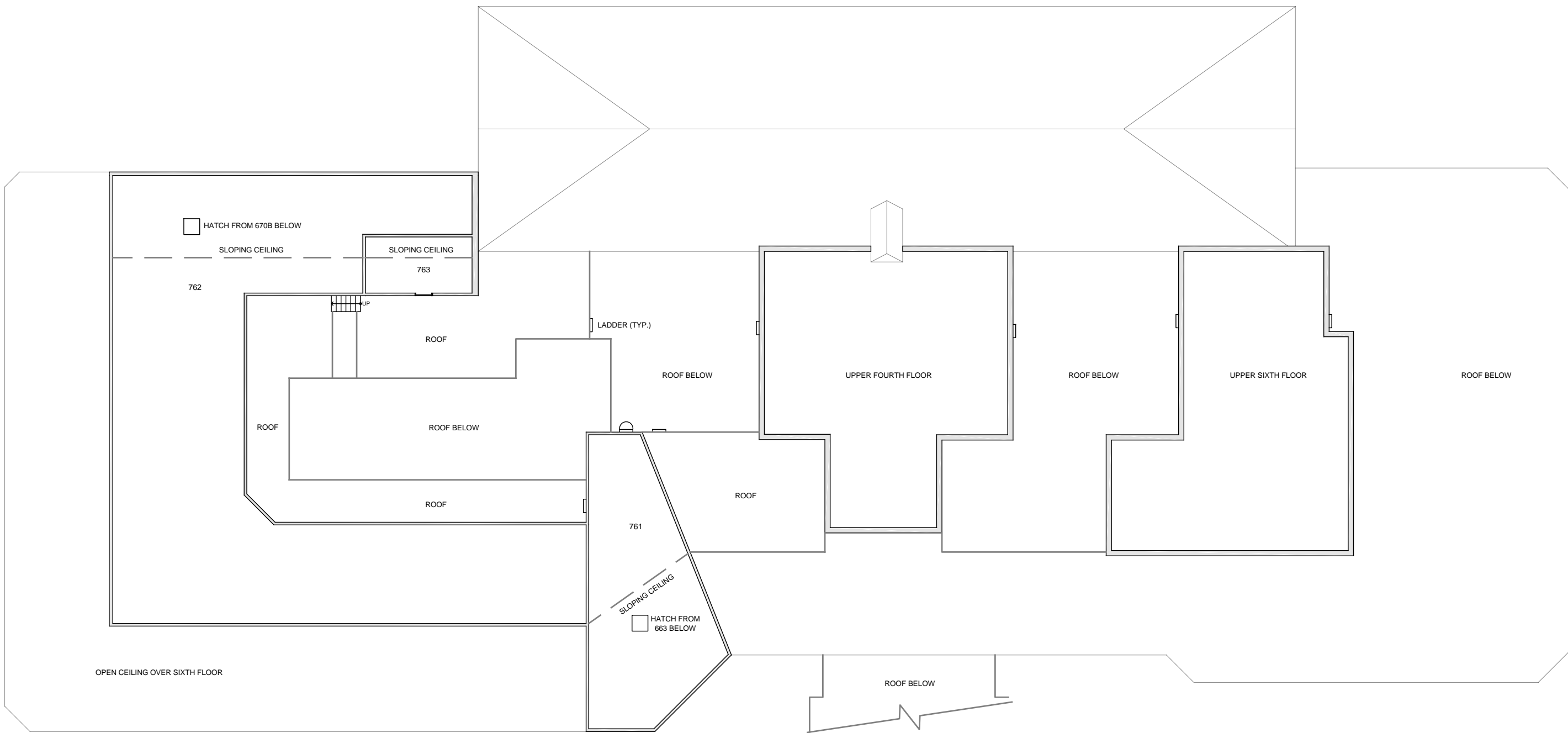
WILSON LIBRARY

FLOOR 6

Date Revised: 03/14/2016

Last Sync With FAMIS: 09/09/2015

Building/Zone	WL
Floor #	6



Western Washington University (WWU) makes these documents available on an "as is" basis. All warranties and representations of any kind with regard to said documents are disclaimed, including the implied warranties of merchantability and fitness for a particular use. WWU does not warrant the documents against deficiencies of any kind.

